



## PREMIUM AFTERMARKET WIND DEFLECTORS

Chrysler Sebring / Lancia Flavia wind deflector fitting instructions

Product No: 08.14.01.01 (BLACK)

Product No: 08.15.01.01 (BEIGE)



Product No: 37.13.01.04 (GREY)



### What is in the box

- 1 x Wind deflector
- 2 x Wind deflector plugs (left& right)
- 1 x Installation manual

### STEP 1

Open the top, fold both front seats forward and remove the speaker covers.





## PREMIUM AFTERMARKET WIND DEFLECTORS

### STEP 2

Remove both speakers (left & right).

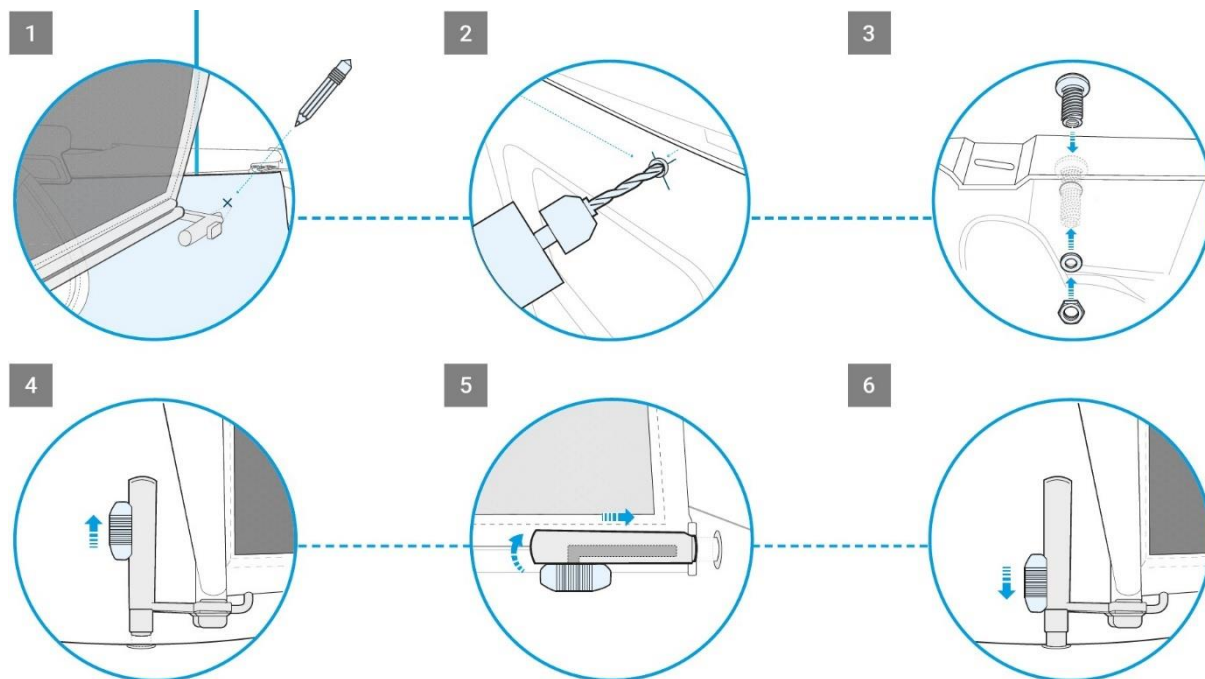




## PREMIUM AFTERMARKET WIND DEFLECTORS

### STEP 3

Hold the wind deflector in the car and mark the position of the side pins on your side panel. Drill a 12mm hole on the marked position. The side panels are made of cardboard so there not much force needed.



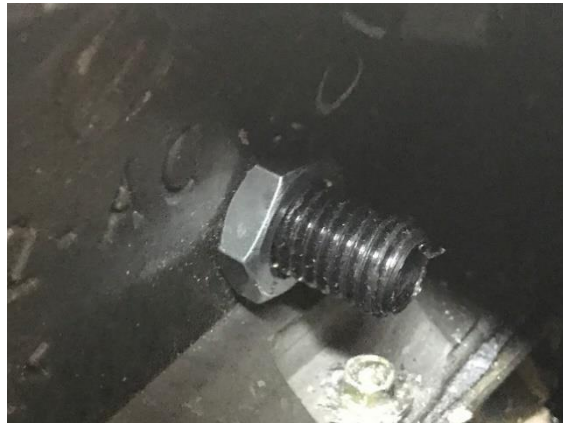




### STEP 4

Push the plug through the hole and fixate the plug with the supplied nut and washer. **Don't tighten the plugs to much** since there are made of plastic the may break if you tighten them with to much force.





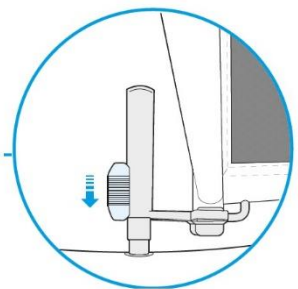
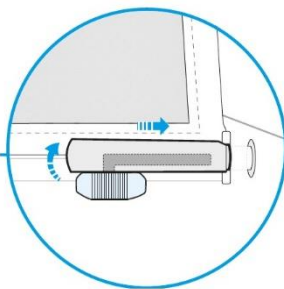
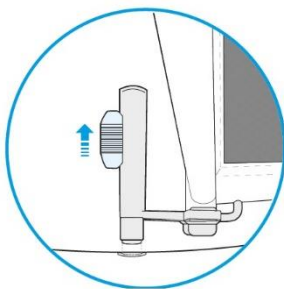
### STEP 5

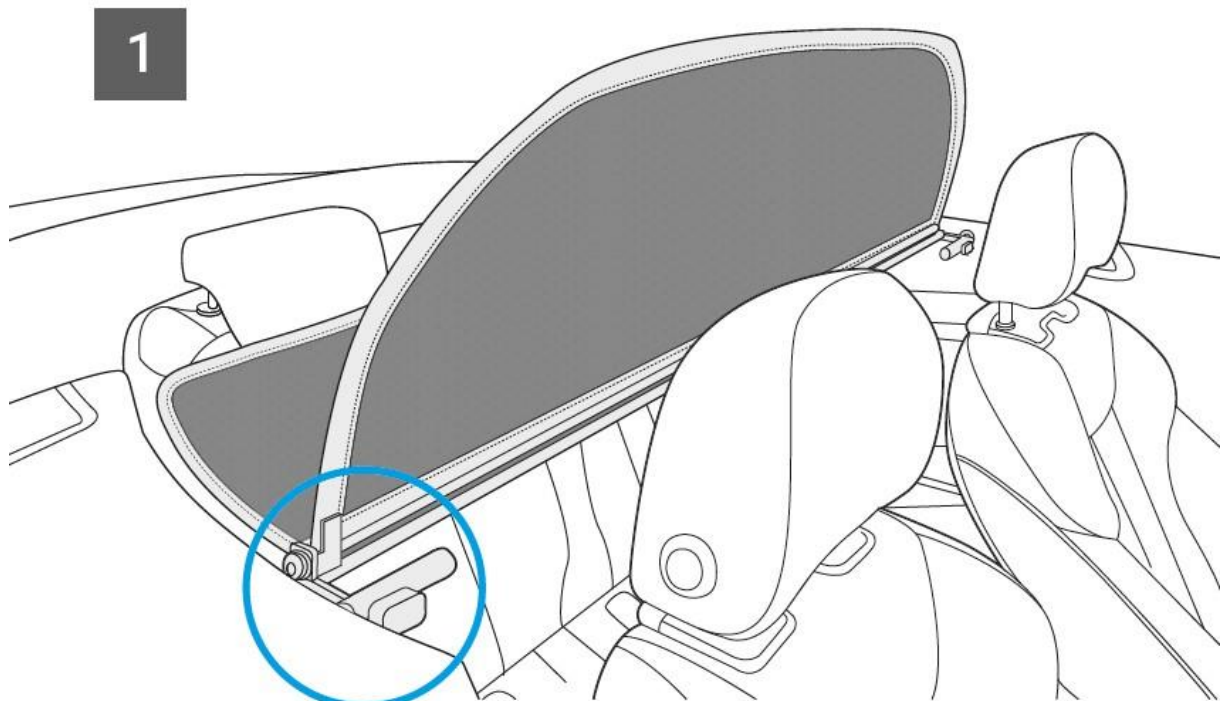
Reinstall the speakers and covers.



### STEP 6

Unlock the wind deflector pins and push them into the wind deflector plugs.

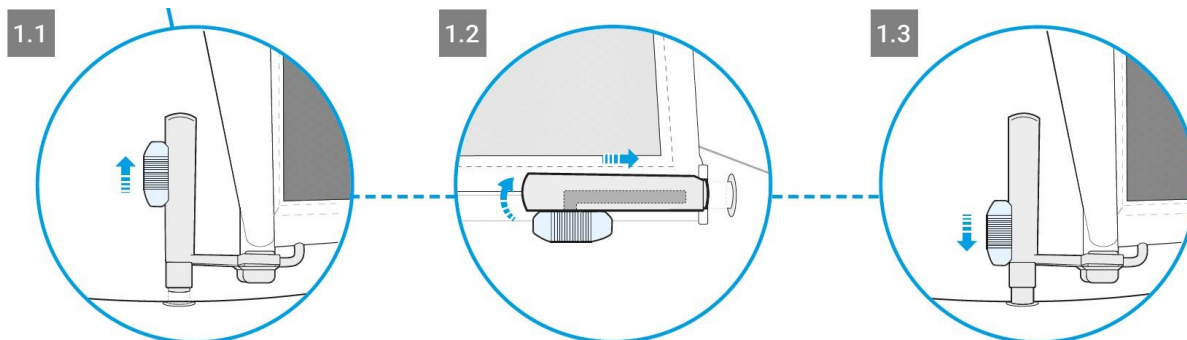








## PREMIUM AFTERMARKET WIND DEFLECTORS



### STEP 4

Go out for a test drive and enjoy you APERTA wind deflector!

