



PREMIUM AFTERMARKET WIND DEFLECTORS



Chevrolet Camaro 6 wind deflector fitting instructions

Product No: 06.01.01.01

Product No: 06.01.01.02



Product No: 06.03.01.01



What is in the box

- 1 x Wind deflector
- 1 x Installation manual



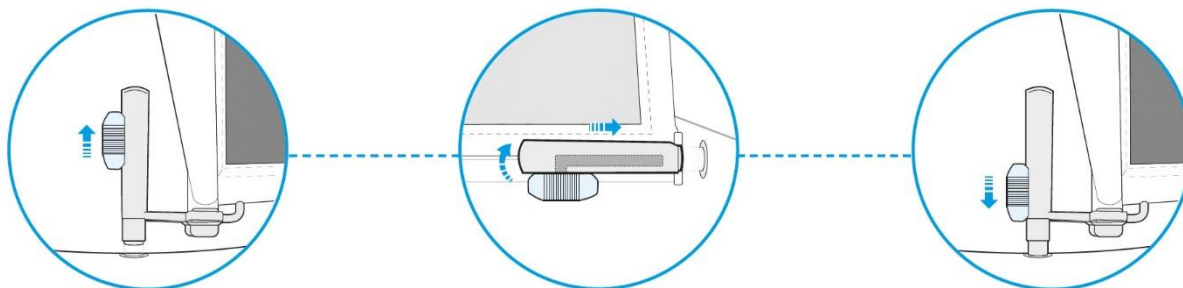
STEP 1

Open the top, fold both front seats forward then slide the wind deflector bracket in the gap between the rear seat and the side panel.



STEP 2

Unlock the wind deflector pins and push them the factory fitted wind deflector slots.





PREMIUM AFTERMARKET WIND DEFLECTORS



STEP 3

Go out for a test drive and enjoy you APERTA wind deflector.

