



PREMIUM AFTERMARKET WIND DEFLECTORS

Mitsubishi Colt CZC wind deflector fitting instructions

Product No: 25.01.01.01



What is in the box

1 x Wind deflector

1 x Installation manual



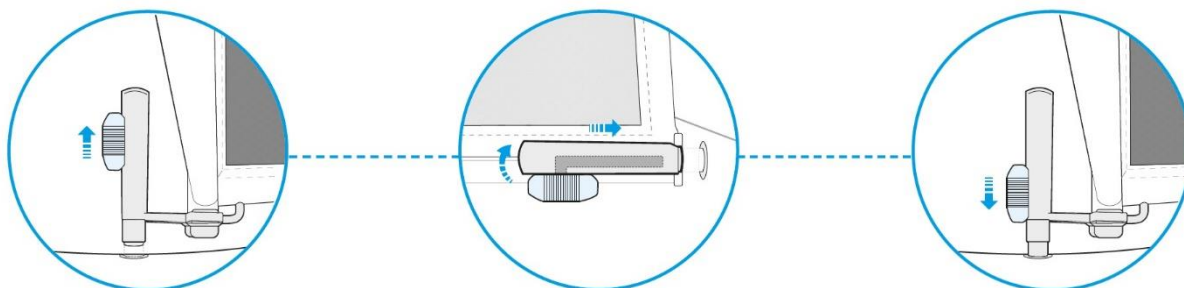
STEP 1

Open the top and fold the front seats forward then slide the rear pins of the wind deflector into the rear seat seatbelts openings.



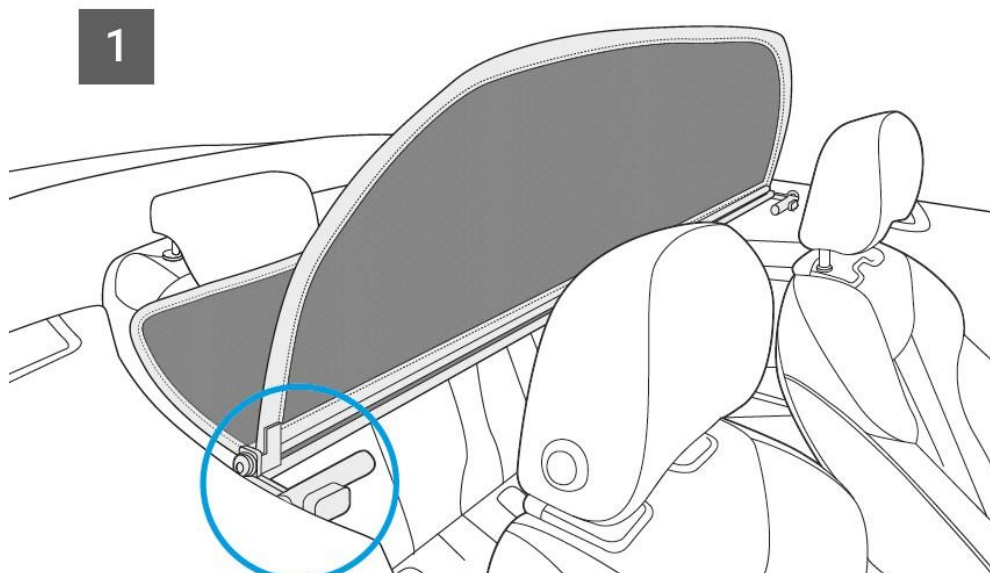
STEP 2

Unlock the wind deflector pins and push them the factory fitted wind deflector slots.





STEP 3





PREMIUM AFTERMARKET WIND DEFLECTORS



STEP 4

Go out for a test drive and enjoy your APERTA wind deflector.

