



PREMIUM AFTERMARKET WIND DEFLECTORS

Porsche 996 997 wind deflector fitting instructions



For our installation video please visit: <https://youtu.be/rrJoJvhjg4Q>

Copy the link in your browser and you will be directed to the video.

What's in the box

1 x wind deflector

1 x installation manual

Product No: 23.03.01





PREMIUM AFTERMARKET WIND DEFLECTORS

STEP 1

Open the top and fold the **front** and **back** seats forward.



STEP 2

Place the wind deflector in the car. First slide the rear brackets into the gaps of the rear seat belts.



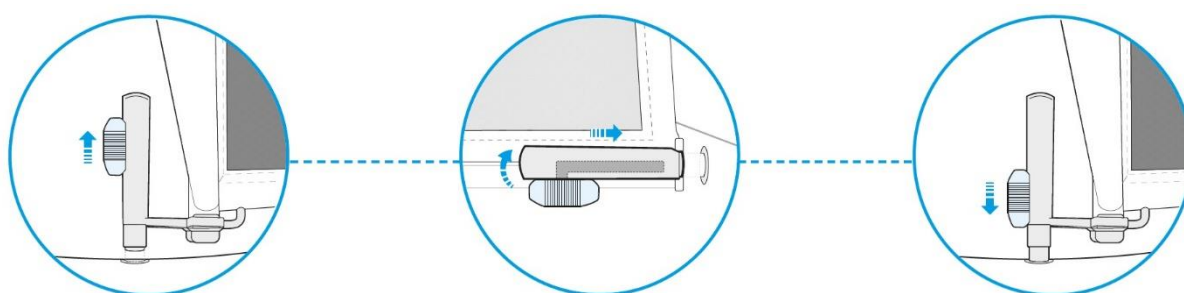


PREMIUM AFTERMARKET WIND DEFLECTORS



STEP 3

Unlock the wind deflector pins and push them into the holes in your side panel.





PREMIUM AFTERMARKET WIND DEFLECTORS



STEP 4

Go out for a drive and enjoy your APERTA wind deflector!

